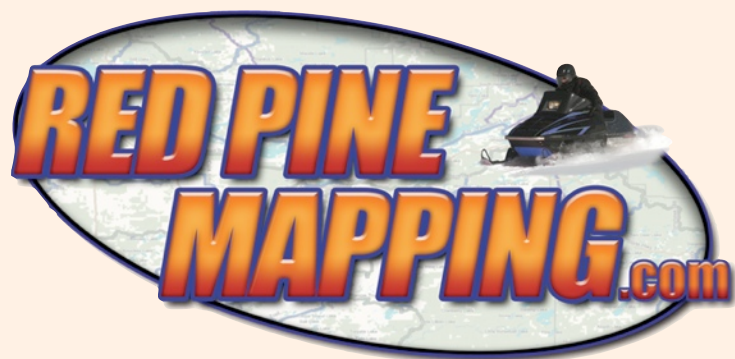


Garmin Mapsource Map Installation And Routing

Page 2: Creating A Route In Mapsource

Page 5: Installing Maps On Your GPS With Mapsource

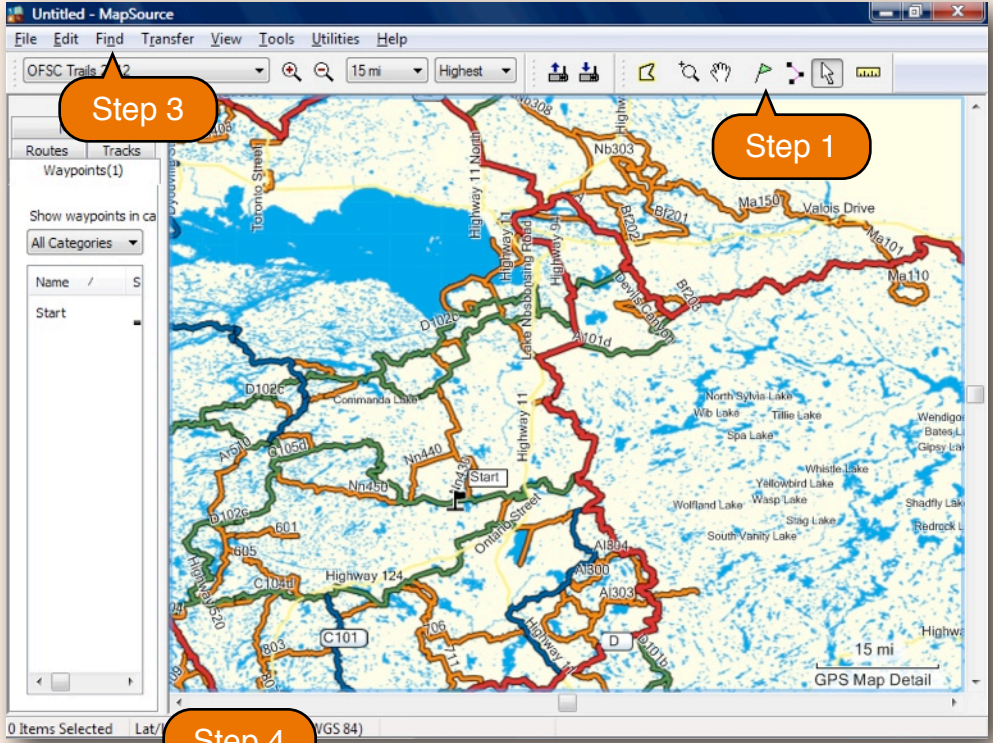


Creating A Route In Mapsource

If you do not wish to create a route but only to load maps onto your GPS, see p.5.

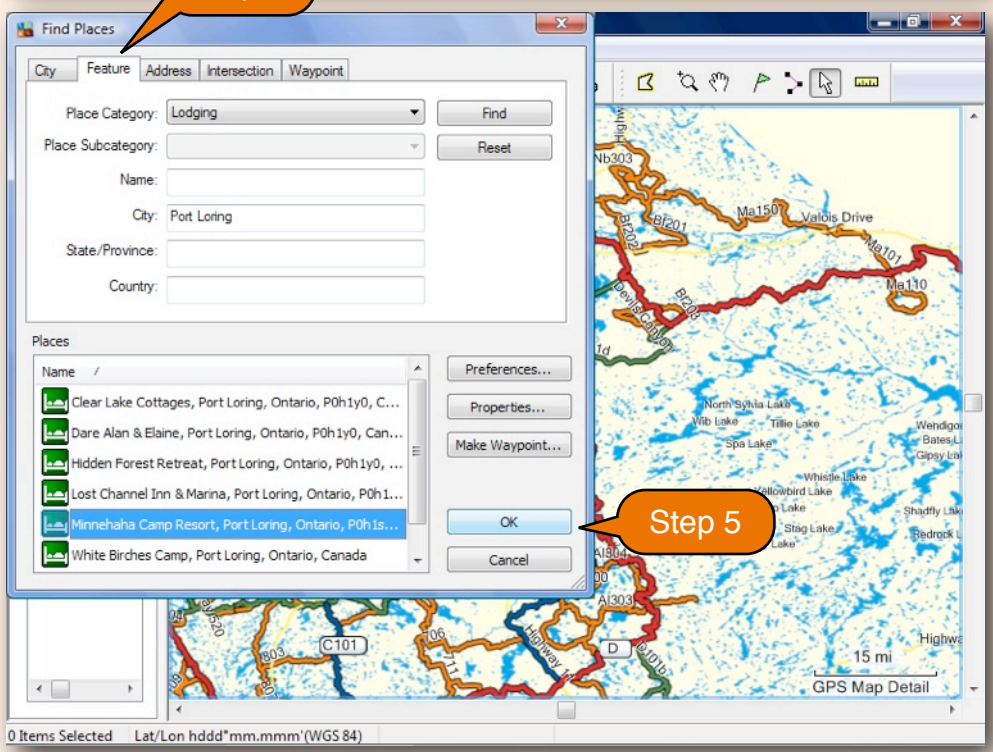
To make a route, you need at least two waypoints to serve as your start point and destination. You can also have other waypoints along the way.

1. To begin, make a waypoint called "Start." Click on the waypoint tool, and then click your starting spot on the map.
2. In the pop-up window, type a name for your waypoint, and then click OK.

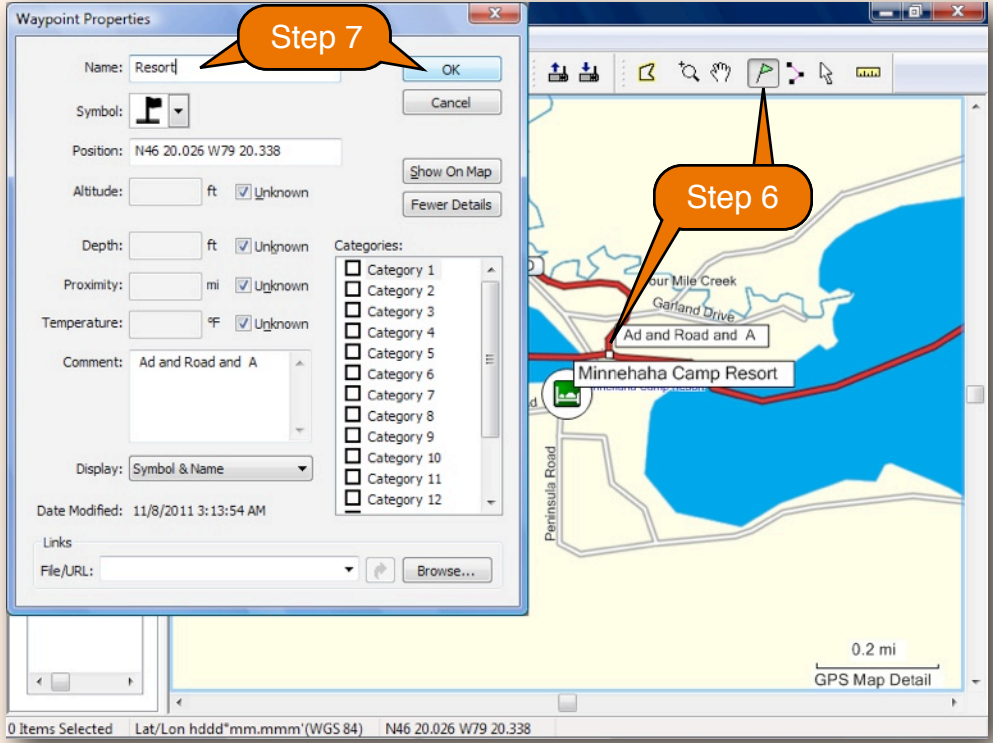


For the destination, find a Point Of Interest (POI).

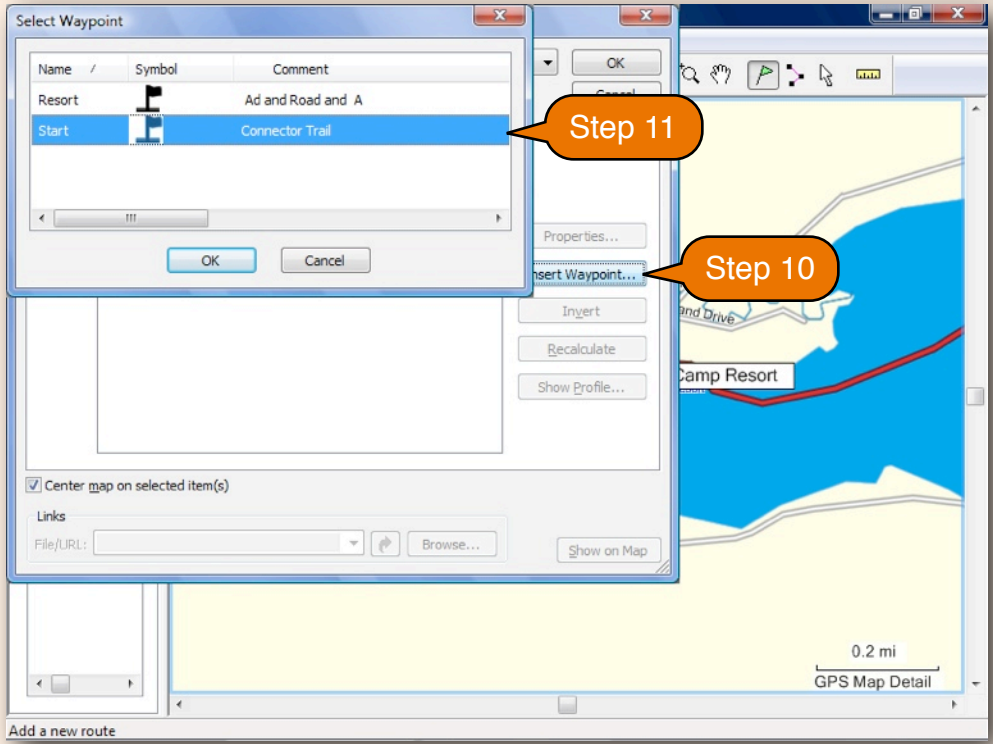
3. Choose "Find Places" from the "Find" menu.
4. Click the "Feature" tab, and then narrow your search by choosing the "Place Category." You can also type a city, part of the name of the place you're looking for, etc.
5. Once you find your desired destination, click OK.
You may be tempted to click "Make Waypoint." Since there's a good chance your destination isn't right on a snowmobile trail, making a waypoint on it's actual location may cause auto-routing to fail. In the next step, we'll make a waypoint on the trail nearest the destination.



- 6. Click the waypoint tool again, and then click on a trail near your destination to create a waypoint for it.
- 7. Type a name for your destination waypoint, and click OK.
- 8. Make additional waypoints for any other places your route to cover.



- 9. Go to the "Edit" menu and select "New Route."
- 10. The Route Creation window will appear. Click "Insert Waypoint" to begin adding waypoints to your route.
- 11. Choose your first waypoint, and click OK.
- 12. Click "Insert Waypoint" again and add the remaining waypoints you want in your route.

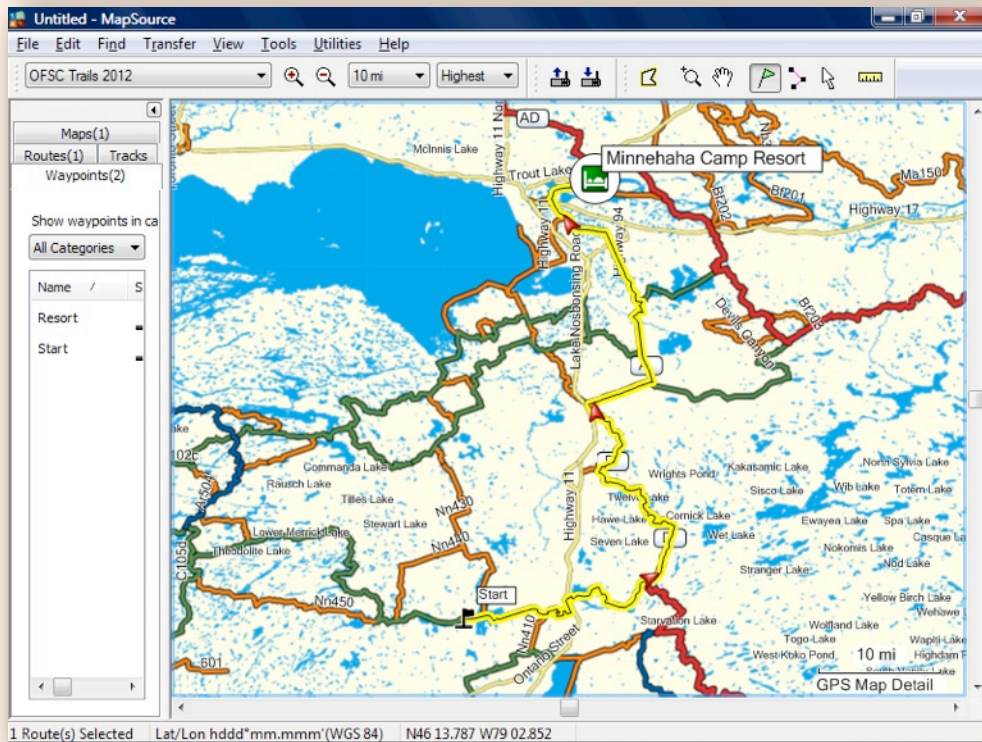
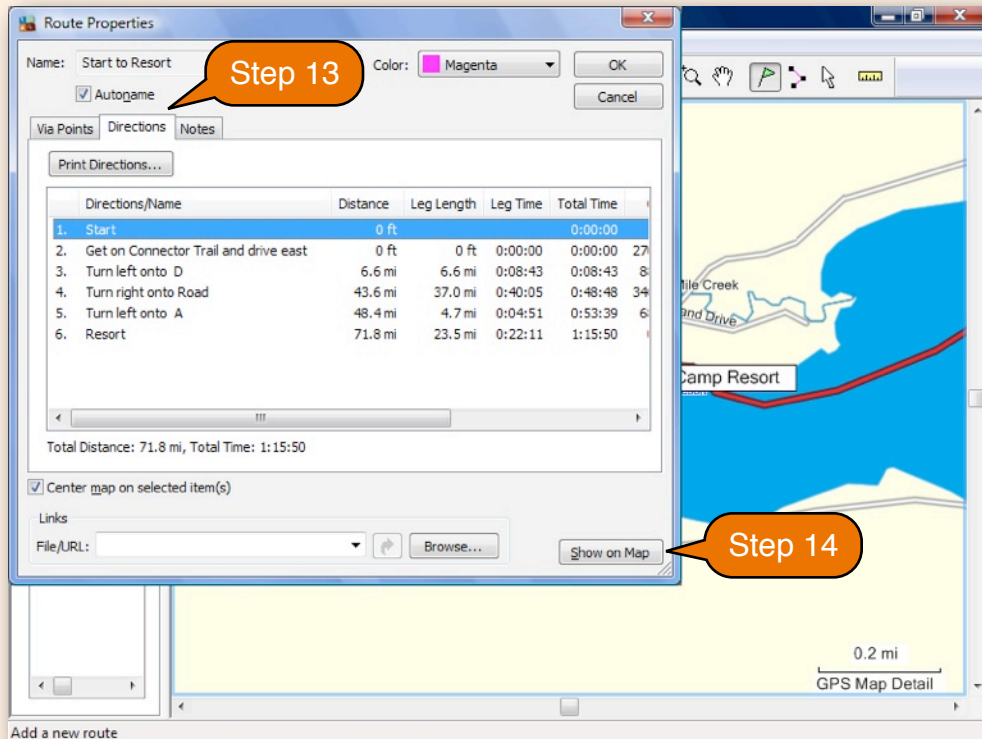


13. Once you've inserted all your waypoints, click "Recalculate." Mapsource will determine the best route across them. You can view the route directions under the "Directions" tab.


14. Click "Show On Map" and you'll see your route highlighted over the map.

Congratulations. You have made a route! You can go to the Edit menu and choose New Route again to make more.

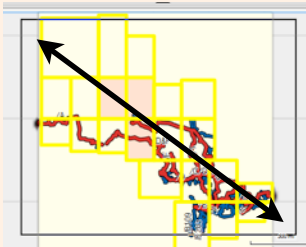
Now we'll load the map, as well as your routes and waypoints onto your GPS.



Map Installation With Mapsource

 [Click here for a video version of this guide.](#)

- 1. Choose the map you want to install (if you have multiple maps) using the drop down menu in the upper left.
- 2. Click the Map Tool.
- 3. The gray boxes over the map are regions that can be loaded onto your GPS individually. You can select as many as the available memory of your device can store.



You can click each one individually, or click in a corner of the map and drag a box across to select multiple regions at once:

- 4. Once you have your regions selected, switch to any other maps you want to install now using the drop-down menu and select your desired regions. **All maps you want to have on your GPS must be installed at the same time. Any user installed maps (factory installed maps are permanent) you have on your GPS will be replaced with what you're sending to it now.**

- 5. Connect the media you want to store the map on to your computer. *This can be your GPS if you want to store the map on its internal memory, your GPS with an SD card in it, or an SD card connected to your computer.*

- 6. Click Send To Device.
- 7. Select the location where you want to store the map. *Choices may include your GPS's internal memory, an SD card inside your GPS, or an SD card connected to your computer. If nothing shows up under "Device," check your connections and click the "Find Device" button.*

- 8. Click Send.

MapSource will now begin loading the map(s) onto your GPS or memory card. This process can take anywhere from a few seconds to several minutes, depending on your hardware and how many maps you've chosen.

